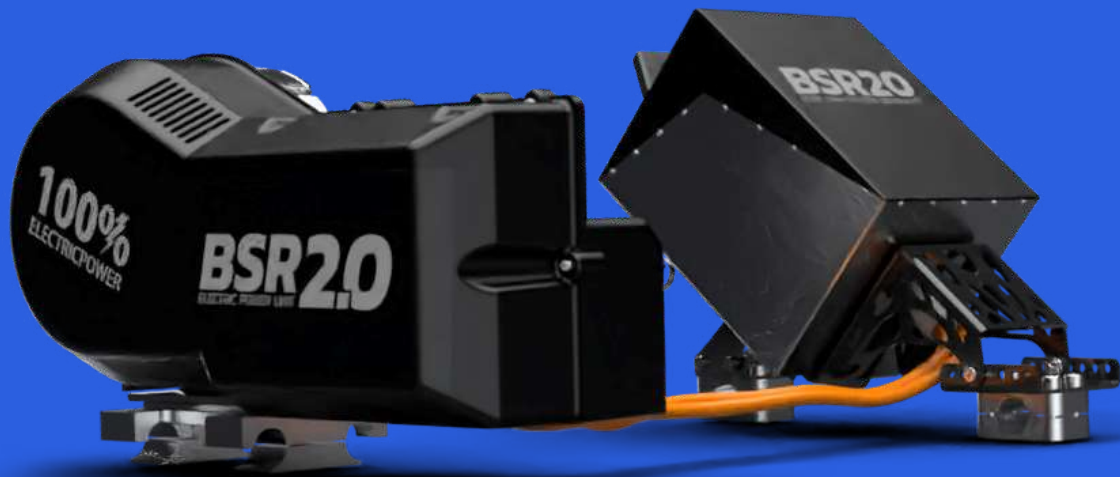


**7kW**

# **POWER UNIT**



# BSR 2.0 POWER UNIT PERFORMANCE



<b>Motor Power:</b>	7kW (9.1 Hp)
<b>Motor Torque:</b>	28Nm
<b>Rear axle torque:</b>	56.0Nm
<b>Gear ratio:</b>	1:2.0 (32T/64T/219)
<b>Motor RPM range:</b>	5000 RPM
<b>Top Speed:</b>	till 90km/h
<b>Acceleration from 0-60km/h:</b>	~3.5 sec.
<b>Throttle:</b>	Hall sensor (dirable)
<b>Cooling:</b>	Air
<b>Battery:</b>	Li-Ion with BMS and fizical fuse protection
<b>Driving range:</b>	20+ min (real life test results)
<b>Charger:</b>	AC (90-240V) to DC (48V) (optional DC to DC for solar charging)
<b>Charging time:</b>	30-60 min
<b>Weight of complete unit:</b>	24,9 Kg (included battery)
<b>Warranty:</b>	2 years unlimited driving hours
<b>IP level:</b>	64
<b>Others:</b>	All the mounting parts and bolts are included in the package

<b>Price (including battery):</b>	3'800 Eur
<b>Extra battery:</b>	1'800 Eur
<b>Extra charger:</b>	350 Eur

\* All Prices Excluding VAT

<b>Included in Power Unit:</b>	ELECTRIC MOTOR, CONTROLLER, BATTERY, CHARGER, BUTTONS, WIRING, MOUNTING PARTS, COVERS, BOLTS, INSTALLATION INSTRUCTION.
--------------------------------	---

## BATTERY

- Quick swap system, replace it in less than 30 seconds
- 2x BMS and physical fuse protection
- Air cooling (aluminum radiators)
- Capacity 35Ah (standard) / 42Ah and 50Ah (optional)
- Discharge peak 300A (continuous 200A)
- Charging power till 2kW (40A / 48V), 1,2-1,5kW standard
- Weight 10,5 – 11,5 Kg (depends on capacity model)
- 2 years unlimited cycle warranty
- Buy Back with 25% of price after warranty
- Maintenance service after warranty time



## MOTOR



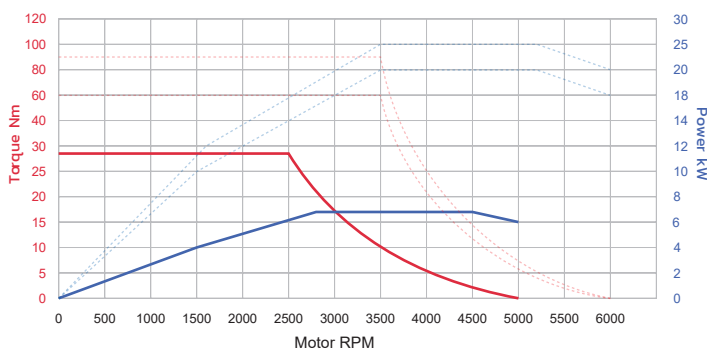
- PMSM brushless motor
- Continuous power 4kW, peak power 12kW
- Air cooling
- Operating voltage 48V
- RPM max 5000
- Weight 13,4 Kg
- Motor efficiency 88%
- 2 years unlimited warranty
- Maintenance service after warranty time

# CHARGER

- AC to DC with all type of AC plugs
- Charging voltage 48V (nominal)
- Charging power 20A (standard) / 30A and 40A (optional)
- Air cooling (aluminum radiators)
- 100% Automated system (with LED indicators)
- Weight 2,5 – 5,5 Kg (depending on model)
- 2 years unlimited warranty
- Maintenance service after warranty time



## POWER CURVE



- Instant torque 28Nm
- Best performance till 3500 RPM
- Top speed: 80-90 km/h
- Throttle response Linera
- Regenerative braking (optional)

## MORE INFO

BSR 2.0 Power Units are designed so that they can be quickly and efficiently installed on any chassis instead of the standard internal combustion engine within 10-15 minutes without additional equipment and knowledge. All that must be taken into account is the location of fastening and the dimensions of the components. Fastenings are designed so that they can be adapted to different chassis. It is possible to develop specific fastenings on request.

## OTHER OPTIONS

7kW



KIDS

15kW



KIDS/JUNIOR

20kW



JUNIOR

25kW



SENIOR