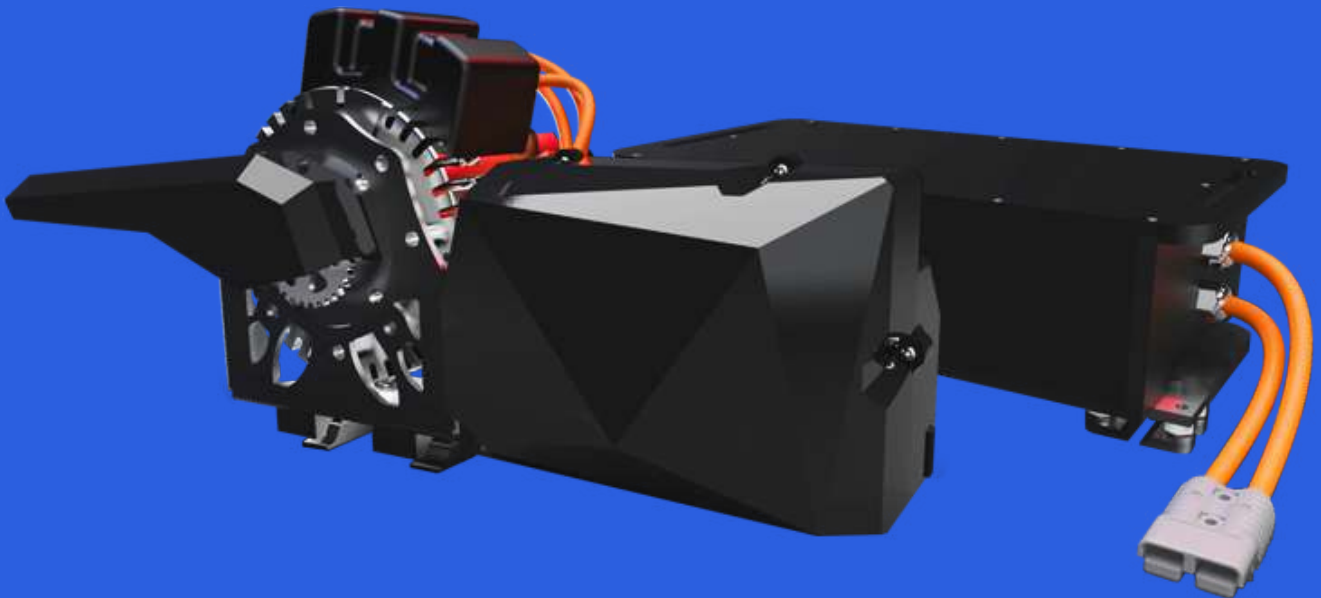


**15kW**

# **POWER UNIT**



# BSR 2.0 POWER UNIT PERFORMANCE



<b>Motor Power:</b>	15kW (20.1 Hp)
<b>Motor Torque:</b>	40Nm
<b>Rear axle torque:</b>	67.0Nm
<b>Gear ratio:</b>	1:1.7 (42T/70T/219)
<b>Motor RPM range:</b>	3200 RPM
<b>Top Speed:</b>	up to 100km/h
<b>Acceleration from 0-100km/h:</b>	~7.5 sec.
<b>Throttle:</b>	Hall sensor (dirable)
<b>Cooling:</b>	Air
<b>Battery:</b>	Li-Ion with BMS and fizical fuse protection
<b>Driving range:</b>	20+ min (real life test results)
<b>Charger:</b>	AC (90-240V) to DC (48V) (optional DC to DC for solar charging)
<b>Charging time:</b>	30-60 min
<b>Weight of complete unit:</b>	34,9 Kg (included battery)
<b>Warranty:</b>	2 years unlimited driving hours
<b>IP level:</b>	64
<b>Others:</b>	All the mounting parts and bolts are included in the package

<b>Price (including battery):</b>	5'800 Eur
<b>Extra battery:</b>	2'000 Eur
<b>Extra charger:</b>	350 Eur

*\* All Prices Excluding VAT*

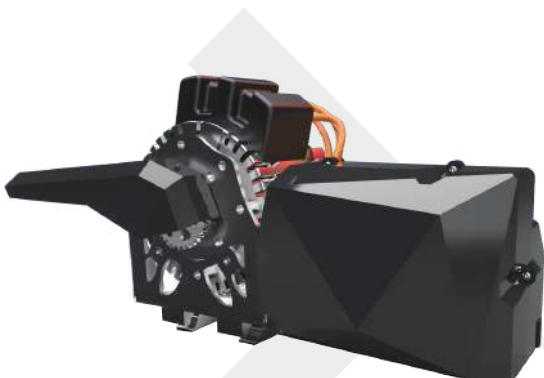
<b>Included in Power Unit:</b>	ELECTRIC MOTOR, CONTROLLER, BATTERY, CHARGER, BUTTONS, WIRING, MOUNTING PARTS, COVERS, BOLTS, INSTALLATION INSTRUCTION.
--------------------------------	---

## BATTERY

- Quick swap system, replace it in less than 30 seconds
- 3x BMS and physical fuse protection
- Air cooling (aluminum radiators)
- Capacity 52Ah (standard) / 62Ah (optional)
- Discharge peak 450A (continuous 300A)
- Chargin power till 2,5kW (40A / 48V), 1,2-2,0kW standard
- Weight 20,5 – 21,0 Kg (depends on capacity model)
- 2 years unlimited cycle warranty
- Buy Back with 25% of price after warranty
- Maintenance service after warranty time



## MOTOR



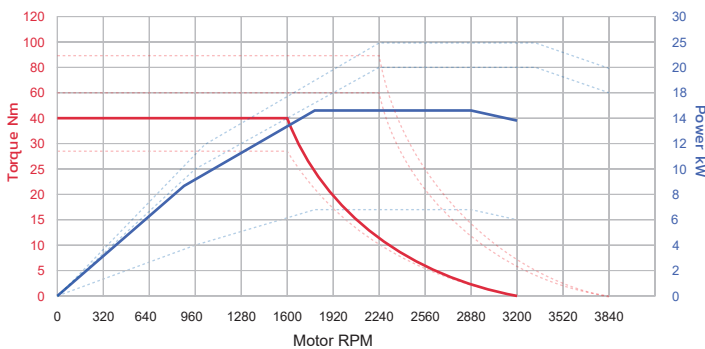
- PMAC brushless motor
- Continuous power 15kW
- Air cooling
- Operating voltage 48V
- RPM max 3200
- Weight 18,9 Kg
- Motor efficiency 92%
- 2 years unlimited warranty
- Maintenance service after warranty time

# CHARGER

- AC to DC with all type of AC plugs (optional DC to DC for solar charging)
- Charging voltage 48V (nominal)
- Charging power 20A (standard) / 30A and 40A (optional)
- Air cooling (aluminum radiators)
- 100% Automated system (with LED indicators)
- Weight 2,5 – 5,5 Kg (depending on model)
- 2 years unlimited warranty
- Maintenance service after warranty time



## POWER CURVE



- Instant torque 40Nm
- Best performance up to 3200 RPM
- Top speed: up to 100 km/h
- Throttle response Linera
- Regenerative braking (optional)

## MORE INFO

BSR 2.0 Power Units are designed so that they can be quickly and efficiently installed on any chassis instead of the standard internal combustion engine within 10–15 minutes without additional equipment and knowledge. All that must be taken into account is the location of fastening and the dimensions of the components. Fastenings are designed so that they can be adapted to different chassis. It is possible to develop specific fastenings on request.

## OTHER OPTIONS

7kW



KIDS

15kW



KIDS/JUNIOR

20kW



JUNIOR

25kW



SENIOR